

**2870 S. Chaparral Blvd.
Gilbert, AZ 85295**

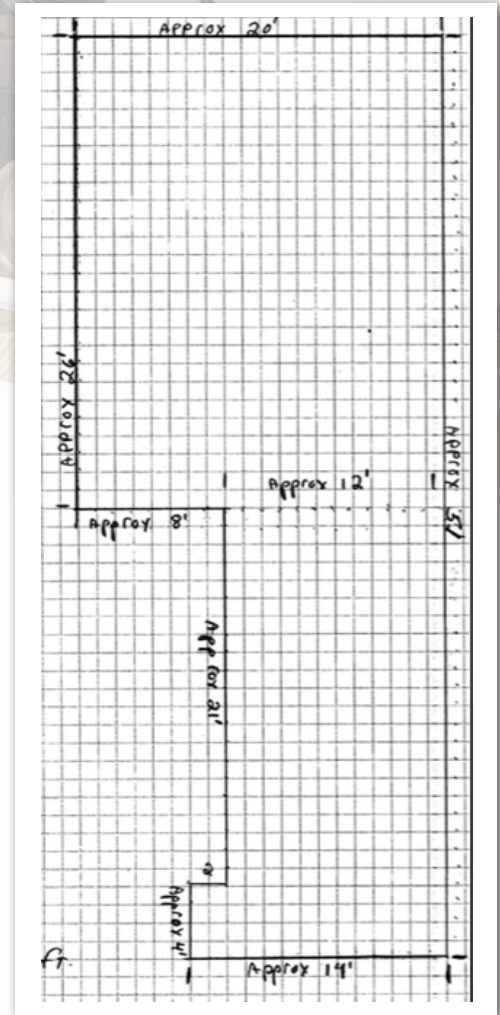
*The basement train room is
approximately 51 feet long
for 828 Sq. Ft. of train space.*

In addition to the train room
the basement contains

- **Two LARGE bedrooms**
- **A full bath**
- **Den/workshop**

Other Features Of The Home Include:

- 5 Beds
- 3 Baths
- Side Entry Garage
- Large Driveway
- 3,280 Sq. Ft.
- Large Covered Patio
- Lovely Backyard
- Great Central Gilbert Location
Near Schools, Shopping, And
Entertainment
- List Price \$393,000



Jerry Raviol

ASSOCIATE BROKER

602-695-5478 | Office: 480-820-3333

Fax: 602-564-6387 | Toll Free: 888-572-8465

Email: JerryR@HouseAZ.com

1640 S. Stapley Dr., #124 | Mesa, AZ 85204

